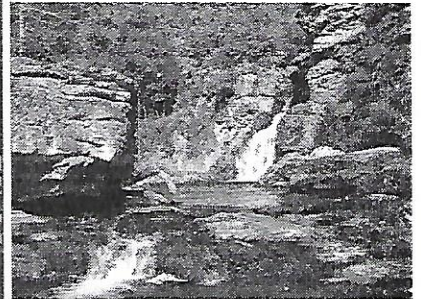



OFFICE of
PROFESSIONAL DEVELOPMENT
School of Continuing Studies & Academic Outreach
EAST TENNESSEE STATE UNIVERSITY

Wildacres 2017
Presents
Johnny Molloy



Linville Gorge, NC

ETSU Alliance for Continued Learning

REGISTRATION (Membership not required)

Name: _____

Phone: _____

Address: _____

Email: _____

Roommate preference: _____

Special dietary needs: _____

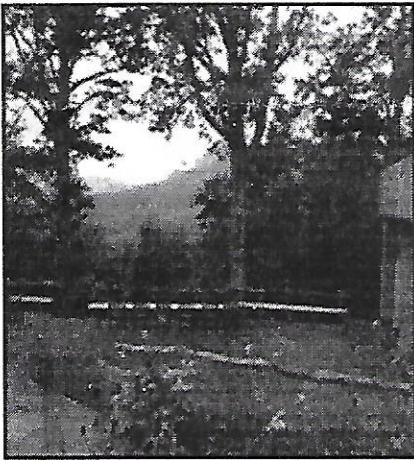
Do you require a room with street level access or handicap facilities? Limited availability. YES NO (Please circle one.)

Do you need a ride? _____ Can you carry extra riders? _____

Registration is first come/first served. Single and Special room requests are subject to limited availability.

Mail registration form and fee of \$305 per person (double occupancy) or \$370 per person (single occupancy, if available) to
P O Box 280, Little Switzerland, NC 28749 or call 828.756.4573. Make check payable to WILDACRES RETREAT. **All meals are included**

ETSU is an AA/EEO employer.



Alliance for Continued Learning

ETSU's Alliance for Continued Learning program invites you to attend the twenty-second annual retreat Monday, August 28 (after 4 PM) through Friday, September 1 (after breakfast). WILDACRES RETREAT features an excellent staff in a beautiful wilderness area just off the Blue Ridge Parkway a few miles from Little Switzerland, NC.

Website: www.wildacres.org



Early registration is strongly advised.

ETSU's Alliance for Continued Learning Presents: Johnny Molloy

Adventures and Life Lessons

Author and outdoorsman Johnny Molloy will present a series of outdoor-related instructional and informative sessions covering topics pertinent to the outdoors in general and the Southern Appalachians in particular. Some of the topics to be covered:

How to Turn a Flatlander into a Half-wild Outdoor Writer

Johnny will share his unusual but true story of his evolution from suburban Memphian to outdoor writer. He has explored the wilds of America and written over 60 books covering hiking, camping, and paddling destinations as well as true outdoor adventure stories.

Exploring Western North Carolina

Learn about all the exciting outdoor destinations within close proximity of Wildacres and the rest of Western North Carolina, plus a few additional locales in the Tar Heel State you can discover for yourself.

The Appalachian Trail & Its Unique Subculture

Take a photo tour of the best hikes on the southern Trail and learn about the

hiker subculture that permeates the AT, such as trail names, trail shelters, and trail angels. See if you or someone you love is a candidate to thru-hike America's most celebrated footpath.

Learn the basics of Waterfall photography

Explore waterfalls from the Shenandoah National Park down the Blue Ridge Parkway to the Great Smoky Mountains in a photo tour and learn about waterfall photography. Then take a fun field trip to Linville Falls and the multiple cascades therein. We'll start with the wheelchair-accessible trail; those who are able may continue to Erwins View, for a 2.1-mile walk. Those up for a challenge may continue on a trek to the base of the Linville Falls and the plunge basin, a total walk of 4.2 miles.

Life Lessons

Johnny shares his life lessons learned on the trail and how to better understand the three important legs of the footstool upon which our life sits. No matter what your age, you can be your best! Learn how indulging in the great outdoors can help you be your mental, physical, and spiritual best.

About the facilitator

Johnny Molloy is a writer and adventurer based in Johnson City. His outdoor passion was ignited on a backpacking trip in Great Smoky Mountain National Park while attending the University of Tennessee. If you put all his days of camping together, it equals about 11 straight years of camping out.



On the advice of friends who urged him to write about his adventures, he parlayed his love of the outdoors into an occupation. The result of his efforts are over 60 books. Molloy writes for magazines, websites, and his local paper, the Johnson City Press.

Website: www.JohnnyMolloy.com

ETSU Office of Professional Development
P.O. Box 70559
Johnson City, TN 37614
(423) 439-8084
etsu.edu/professionaldevelopment